

## Top Stories This Week

- IDBI Bank board approved sale of part or whole shareholding of 48 lakh shares in CARE
- Godrej Properties -Unit acquires 49 percent of paid-up share capital & entire debentures of Godrej Premium Builders
- Zuari Group raised open offer size to buy stake in Mangalore Chemicals and Fertilisers (MCFL)
- Wockhardt & Cadila voluntarily recall drugs in US: PTI
- Cabinet may take up Motor Vehicles Amendment Bill in February: PTI
- Infosys to expand CSR operations in America: PTI
- Lupin got USFDA nod for HIV drug: BS. Got nod to market a generic version of Prezista tablets
- Reliance Capital has got tax department's nod for pension scheme. Got government approval for its first equity-oriented pension scheme.
- Kingfisher Airlines -Aviation license expired on December 31, 2014. Kingfisher's failed to renew its operator permit.
- RBI Extends Deadline For Application Of Small, Payments Banks Licenses By 2 Week To Feb 2

## Weekly Indices Change

Index	Close	P. Close	Chg. (%)
SENSEX	27887	27241	2.37
NIFTY	8395	8200	2.38
MIDCAP	10530	10115	4.10
SMLCAP	11308	10894	3.80
METAL	10966	10562	3.83
OIL&GAS	9917	9878	0.39
AUTO	18837	18455	2.07
TECK	5927	5762	2.86
BANDEX	21830	21253	2.71
IT	10721	10422	2.87
FMCG	7776	7686	1.17
HC	14720	14409	2.16
PSU	8312	8121	2.35
CD	9758	9359	4.26
POWER	2115	2032	4.08
CG	15760	15113	4.28
REALTY	1571	1533	2.48

## Global Indices

DOW	17832	18053	-1.22
NASDAQ	4726	4806	-1.66
FTSE	6547	6609	-0.94
NIKKEI	17450	17818	-2.07
HANGSENG	23857	23349	2.18

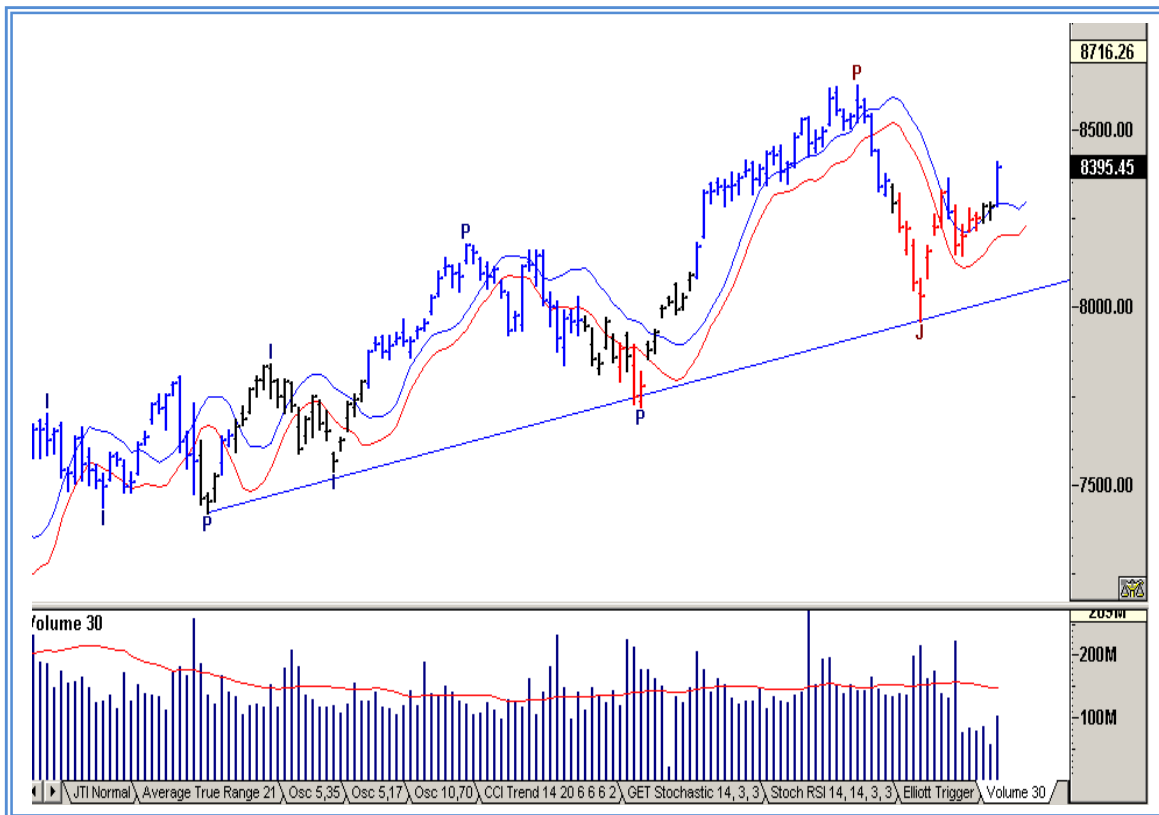
## Top Gainers Weekly

Scrip	Price	% Chg
HCL Infosystem	55.65	29.57
GIC Housing Finance	234.70	25.51
Aban Offshore	511.45	21.86
Persistent Systems	1874.35	16.16
Gati Ltd.	284.40	15.47

## Top Losers Weekly

Scrip	Price	% Chg
JK Tyre & Industries	131.05	5.31
Opto Circuits India	24.85	4.05
Future Lifestyle	85.25	3.45
Bajaj Finserv Ltd.	1275.65	2.55
Mastek Limited	401.45	2.18

## Nifty Corner



Support & Resistance						
S3	S2	S1	Nifty	R1	R2	R3
8050	8100	8250	8395	8450	8550	8600
Moving Averages						
20DMA		50DMA		100DMA		200DMA
8265		8310		8115		7640

## Market Commentary

The market edged higher last week in consonance with a rally in other Asian stock markets. Market rose in all five trading sessions of the week. Major gains, however, were reported on Friday, 2 January 2015, following the government's move to replace the Planning Commission with more efficient NITI Aayog (National Institution for Transforming India). In the week ended on Friday, 2 January 2015, the S&P BSE Sensex rose 2.37% to settle at 27,887, its highest closing level since 8 December 2014. For next week Nifty likely to trade in the range between 8550 – 8600 in the upper side and 8100 – 8050 in the lower side.

Stocks at 52 wk High

Scrip	Cmp
Adani Ports	319.85
Axis Bank	514.45
Exide Ind	184.95
LIC Housing Fin	468.35
Persistent	1874.00

Stocks at 52 wk Low

Scrip	Cmp
SKIL Infra	23.70
Empee Sugars	3.95
KSS	4.70
Software Tech	2.15
--	--

FII Activity

Date	Figures in crore
29/12	-204.22
30/12	277.92
31/12	481.08
01/01	18.20
02/01	259.82
Total	832.80

DII Activity

Date	Figures in crore
29/12	360.38
30/12	160.87
31/12	-30.55
01/01	19.56
02/01	69.78
Total	580.04

Weekly Stock Idea

Scrip	B/S	Cmp	Tgt
LICHSGFIN	B	466	485
IBREALEAST	B	72	78
ASIANPAINTS	B	775	805
HCC	B	31	36
PARSVNATH	B	19	23

Buy on dips & Sell on rise with Stop-loss of 3%

Volume Breakout Stocks

Scrip	Cmp
Dewan Housing	418.10
Persistent	1874.35
Parsvnath	18.75
LIC Housing Fin	466.75
Cox & Kings	305.90

Week Ahead

MAJOR RESULTS/AGM MEETING THIS WEEK:

8 JAN: 8KMILES, GMBREW,

9 JAN: INFY, BAJAJCORP, SHILPI

**VISIT US AT: [WWW.INDIRATRADE.COM](http://WWW.INDIRATRADE.COM)**

**Disclaimer**

This report is for private circulation within the Indira Group. This report is strictly confidential and for information of the selected recipient only and may not be altered in any way, transmitted to, copied or distributed, in part or in whole, to any other person or to the media or reproduced in any form. This report should not be construed as an offer or solicitation to buy or sell any securities or any interest in securities. It does not constitute a personal recommendation or take into account the particular investment objectives, financial situations, or any such factor. The information, opinions estimates and forecasts contained here have been obtained from, or are based upon, sources we believe to be reliable, but no representation of warranty, express or implied, is made by us to their accuracy or completeness. Opinions expressed are our current opinions as of the date appearing on this material only and are subject to change without notice.